



for Beautiful Fruitful Gardens

**Lauragh
Kerry**

web : www.greenmatters.ie
email : jdh@greenmatters.ie

tel : 087 229 6357

THE DESIGN PROCESS

The following pages describe the design process and what to expect at each stage including an idea of costs. Costs are obviously dependent on the size of the garden and the detail of your requirements. A guideline of design costs for some typical garden sizes is given in the table below.

Stage 1 : Design	Small garden (town house)	Medium garden (c. 1 acre)	Large garden (c. 5 acres)	Small- holding (c.10 acres)	Small Farm (c. 20 acres)	Payment due
Site visit 1 : information gathering /survey garden	50	100	150	200	250	on first site visit as deposit*
Detailed Concept Design with Plant List	360	500	800	1200	1600	on delivery of Design document
TOTAL	410	600	950	1400	1850	

*Depending on requirements we may get a surveyor to measure large sites.

** If you don't want to go ahead with the design after the first visit we will provide brief consultation notes on your garden.

Reductions can be made by reducing the need for site visits (ie if the client gets involved in measuring, has up-to-date existing site plans) – see flow chart below.

Where journey time is over 1 hour we reserve the right to make some charge for travelling. But we will always try to combine visits to an area and so reduce costs.



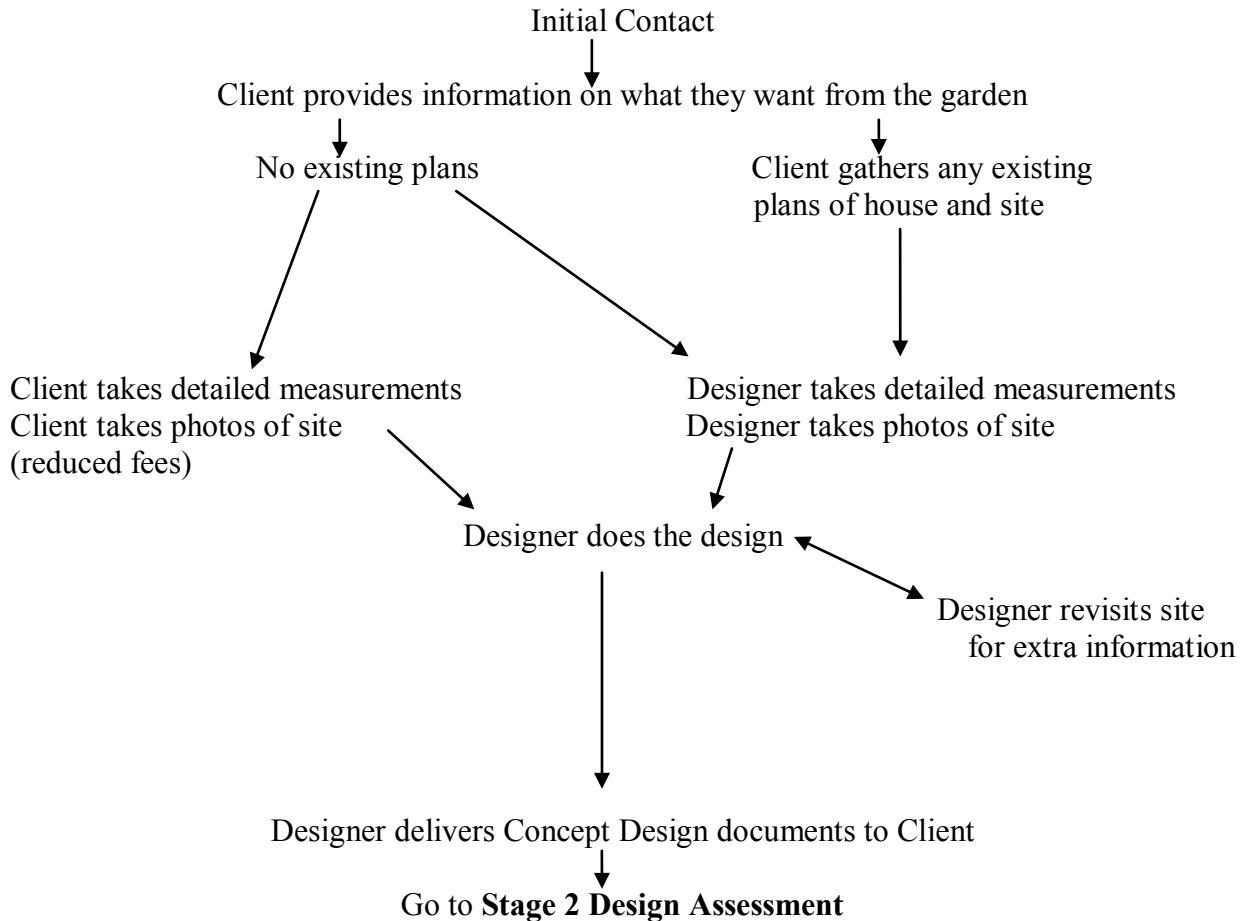
for Beautiful Fruitful Gardens

**Lauragh
Kerry**

web : www.greenmatters.ie
email : jdh@greenmatters.ie

tel : 087 229 6357

STAGE 1 –Design



After the initial design any further work would normally be done on a time & materials basis with aspects of the work tendered out and paid for directly by the client (ie patio build, walling, pond making etc).



for Beautiful Fruitful Gardens

**Lauragh
Kerry**

web : www.greenmatters.ie
email : jdh@greenmatters.ie

tel : 087 229 6357

STAGE 2 : Design Assessment

Client assesses Design Documents

The Design Documents will include

Base Map : showing the current site and main features

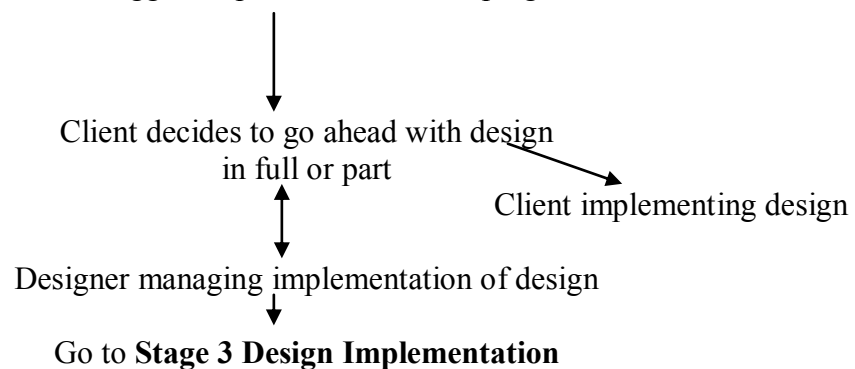
Design Map 1 Overview : plan view of design showing the whole site. For a small site this may be the only plan required.

Detailed Design Maps : plan views showing some areas in more detail as necessary (site dependent). In some cases sketches and section drawings may be included.

Plans will be annotated with descriptions of the design.

Photos in the design document will aim to demonstrate the ideas behind the design giving the client the feel and mood of the finished garden.

Planting & Materials appendix : List of recommended structural plants (trees & shrubs) with recommended source. Ideas of suggested products & landscaping materials





for Beautiful Fruitful Gardens

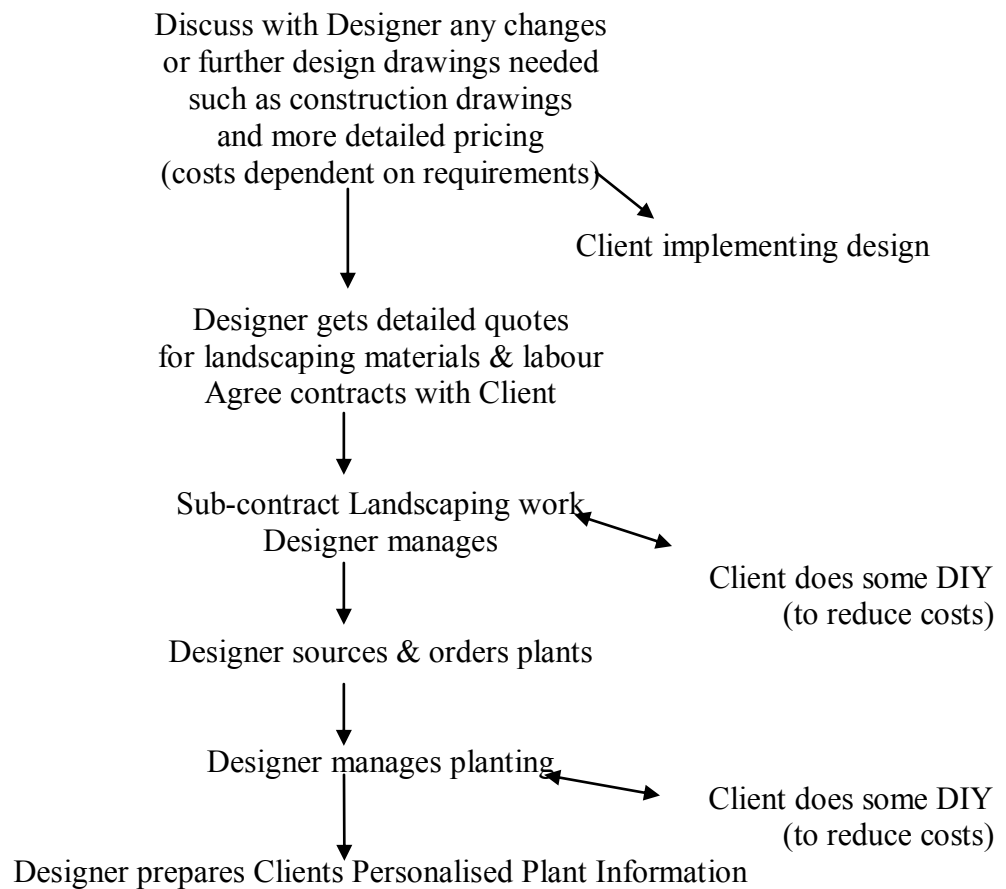
**Lauragh
Kerry**

web : www.greenmatters.ie
email : jdh@greenmatters.ie

tel : 087 229 6357

STAGE 3 : DESIGN IMPLEMENTATION

Charges at this stage will be very dependent on the site and the complexity of the design. All costs will be agreed step by step with the Client.





for Beautiful Fruitful Gardens

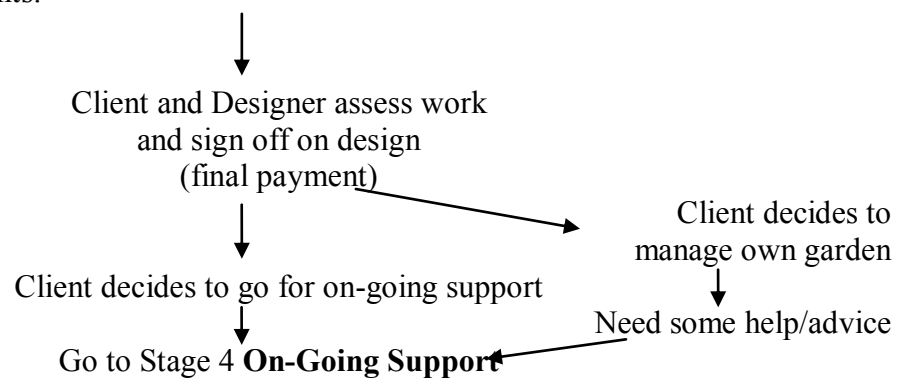
**Lauragh
Kerry**

web : www.greenmatters.ie
email : jdh@greenmatters.ie

tel : 087 229 6357

The Personalised Plant Information will include

Plant Profiles : for each plant in the garden a detail sheet with a photos, flowering and fruiting times, whether it is edible, other uses such as medicinal, dye plant, wildlife attributes, timber and other historical uses. This means that you have no need to plough through gardening books to manage your plants.





for Beautiful Fruitful Gardens

**Lauragh
Kerry**

web : www.greenmatters.ie
email : jdh@greenmatters.ie

tel : 087 229 6357

STAGE 4 : ON-GOING SUPPORT

We want to know how the gardens we design are growing and developing with time so would love to help you get the best out of your garden. We offer an on-going support service which can be tailored to the client's needs. This can take the following forms

Full maintenance with a gardener on a weekly, fortnightly or monthly basis (pay as you go and arranged directly between client and gardener)

Full support with (annual fee)

- monthly emails tailored to your needs
- tailored set of seedlings for herbs & vegetables
- email/phone support

Annual maintenance plan based on your plants and garden (annual fee)

Provision of a tailored set of seedlings for herbs & vegetables (pay as you go)

Email/phone support/visits as required (pay as you go/discretionary ie we don't charge for the occasional call/email).

We envisage new gardeners might opt for a full support service for the first year and then gradually tail off their level of support as they get to know their garden and develop their own gardening skills.